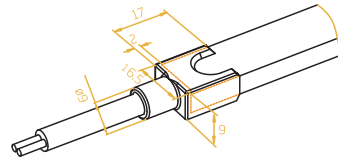


### Silicone Injection-moulded Front Connector-End



FXN - 156 - C - S - IM - FE

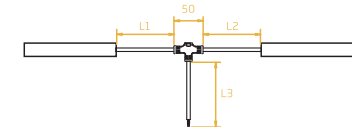


### Silicone Injection-moulded Middle Connector & Power T-feed



FXN - 156 - C - S - IM - TF

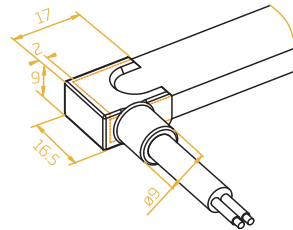
L1 and L2 available in 300mm.  
L3 available in 300mm/1000mm/3000mm.



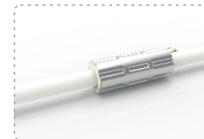
### Silicone Injection-moulded Front Connector-Side



FXN - 156 - C - S - IM - FS

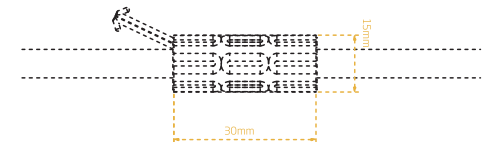


### Anti-wicking Ferrule



The anti-wicking ferrule is located at 115mm ( $\pm 10$ mm tolerance) from the connector on the cable.

For protection against water ingress from inside of cable wire and hence damage the light.

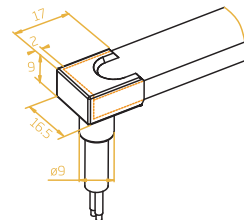


- Note:
1. Unless otherwise stated, the tolerance is  $\pm 0.5$ mm.
  2. The removal of anti-wicking ferrule will void the warranty if any water ingress caused by it.

### Silicone Injection-moulded Front Connector-Bottom



FXN - 156 - C - S - IM - FB



### Silicone Injection-moulded End Cap



FXN - 156 - C - S - IM - EC

